



CM1005 XTREME DUTY • 7YR LED HIGH WATTAGE 360° LAMP

REPLACEMENT LAMPS FOR OUTDOOR POLE/ARM
MOUNTED DECORATIVE LUMINAIRES (TYPE B)

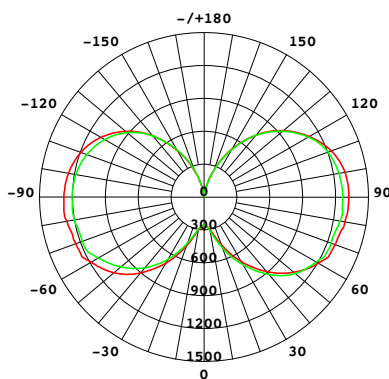
FEATURES

- Environmentally friendly; uses less energy than a traditional lamp.
- 360° optical design that provides even light distribution.
- High Voltage Surge Protection (10KV).
- Hollow heat sink for increased cooling air flow.
- High lumen output.
- Silicone gaskets.

APPLICATION

Replacement lamps for top post, high bays, parking lots and street lighting.


LIGHT DISTRIBUTION CURVE



ELECTRICAL

	LAMP	SYSTEM POWER
Wattage	100W	95W
Voltage	120-277V	
Current	1.0A	
Power Factor	0.9	
Total Harmonic Distortion (THD)	13.5	

LIGHTING PERFORMANCE

Lumens	13000	11059
Lumens Per Watt (Lm/W)	130	116
Color Temperature (CCT)	5000K	
Color Rendering (CRI)	82	
R9 (Red Value)	N/A	
R13 (Skin Tones)	N/A	
Beam Angle	360°	
Light Distribution	Type VS	
Dimmable Lighting Control		

ENVIRONMENT

Operating Temperature	-40° ~ 122°F
Suitable Location	DAMP
Ingress Protection Rating	IP63
Fixture Type	Enclosed

LIFESPAN

Average Life (Hours)	50,000
Warranty (Years)	7

COMPONENTS

LED Light Source	JuFei 2835
------------------	------------

CONSTRUCTION

Housing	Aluminum / PC
Lens	Clear
Base / Power Supply	E39 - Mogul

QUALIFICATIONS

Manufacturer Model #	91583
----------------------	-------



Manufactured by P.Q.L., Inc. • Published lumens on LED products are approximate and may vary slightly.

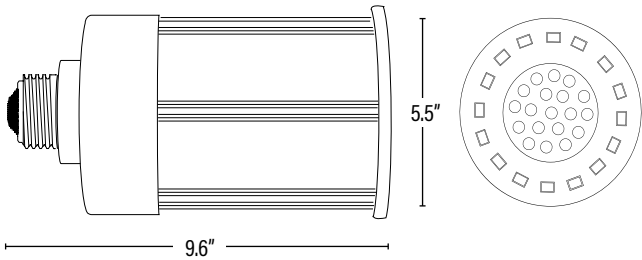
CM1005 XTREME DUTY • 7YR
LED HIGH WATTAGE 360° LAMP



DIMENSIONS (Inches)

Length (MOL)	9.6"
Width/Diameter (MOD)	5.5"
Weight (Lbs)	--

Line drawings may not be to scale and are for general reference only.



PACKAGING		UPC	DIMENSIONS (LxWxH)	GROSS WEIGHT (Lbs)
Master Carton	6	10811768024316	19.6" x 13.1" x 12.8"	--
Individual Box	1	811768024319	6.3" x 6.3" x 12"	--
Country of Origin	China			
HS Tariff	9405.40.8200			

ORDERING

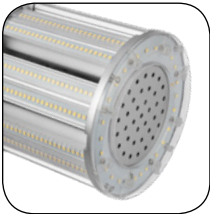
ITEM#	DESCRIPTION	CASE
CM1005	LED 100WT44/360°/CL/50K/MOG/120-277V	6

Manufactured by P.Q.L., Inc. - Manufacturer Model # 91583

ADDITIONAL INFORMATION:

36" Coated Safety Cable with 2" locking clip included.

TOP VIEW



PERFORMANCE DATA

PACKAGING