



LFS482 LT. COMMERCIAL • 2YR LED 48" STRIP FIXTURE LED READY FIXTURE

FEATURES

- Use 30% less energy than a traditional fluorescent fixture
- Die formed, and rigidly fabricated
- LED ready with non-shunted sockets
- Pre-wired at both ends
- Works with both Single-End and Double-End Direct Wire lamps
- Designed for surface or chain mounting

APPLICATION

Ideal for larger warehouses, retail applications, commercial buildings and work areas.

ELECTRICAL

Lamp Type (not included)	T8
Number of Lamps	2
Voltage	120-277V

ENVIRONMENT

Operating Temperature	-4° ~ 122°F
Suitable Location	DAMP
Ingress Protection Rating	IP40

LIFESPAN

Warranty (Years)	2
------------------	----------

CONSTRUCTION

Housing	22 Gauge C.R.S
Base / Power Supply	Hard Wired
Finish	High Gloss Baked White Enamel

QUALIFICATIONS

Manufacturer Model #	55641
Pending	

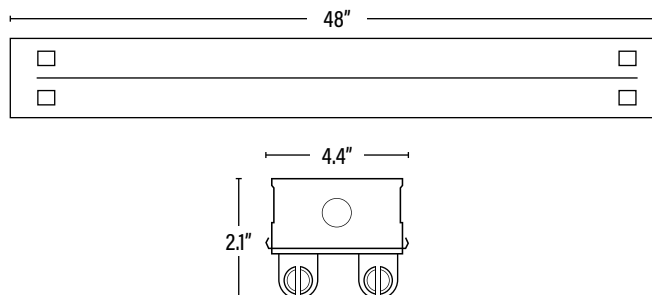
Manufactured by P.Q.L., Inc. • Operating temperature may vary depending on the lamps used. • Specifications are subject to change without notice.

LFS482 LT. COMMERCIAL • 2YR LED 48" STRIP FIXTURE



DIMENSIONS (Inches)

Length	48"
Width	4.4"
Height	2.1"
Weight (Lbs)	--



PACKAGING

		UPC	DIMENSIONS (LxWxH)	GROSS WEIGHT (Lbs)
Master Carton	1	811768024968	49.2" x 4.6" x 2.3"	5.5
Country of Origin	China			
HS Tariff	9405.10.6020			

ORDERING

ITEM#	DESCRIPTION	CASE
LFS482	LED 48" STRIP FIXTURE FOR 2 T8/DE	1

Manufactured by P.Q.L., Inc. - Manufacturer Model # 55641

ACCESSORIES

LF3599	360° LOW/HIGH BAY FIXTURE OCCUPANCY PIR SENSOR 30' DIA, 8-40' HEIGHT 800W/1200W • 120/277V	50
--------	--	----

ADDITIONAL INFORMATION:

- Pairs with Direct Wire Single-End or Double-End UL Type B Lamps. Follow specific lamp installation wiring instructions for correct wiring.